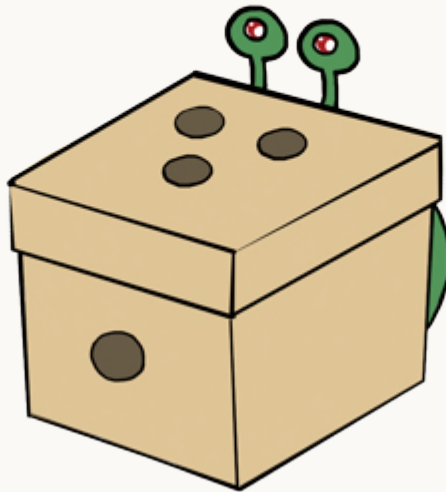


# 4Claying-Interactive Electronics Clay User Manual



**DFROBOT**<sup>®</sup>  
DRIVE THE FUTURE

Phoebe@DFRobot

[www.DFRobot.com](http://www.DFRobot.com)

## Before You Start

1. Fully knead before use.
2. Sealed for preservation, avoid direct sunlight.
3. Sprinkle some water to continue kneading if the surface is dry.
4. Let it dry naturally in the air.
5. Prohibit children from eating the clay or choking.
6. Fully dry the electronic component, if it got wet.



## Electronic Parts

1. LEDs with Cable
2. 3xAA Battery Holder
3. Cable for PIR Motion Sensor
4. PIR Motion Sensor
5. Power Breakout



## Clay Set

6. Ultra-Light Clay



7. Clay Tool Set



# Step1



Three primary colors from which all colors are created are included in the kit. You can mix them into your desired colors.

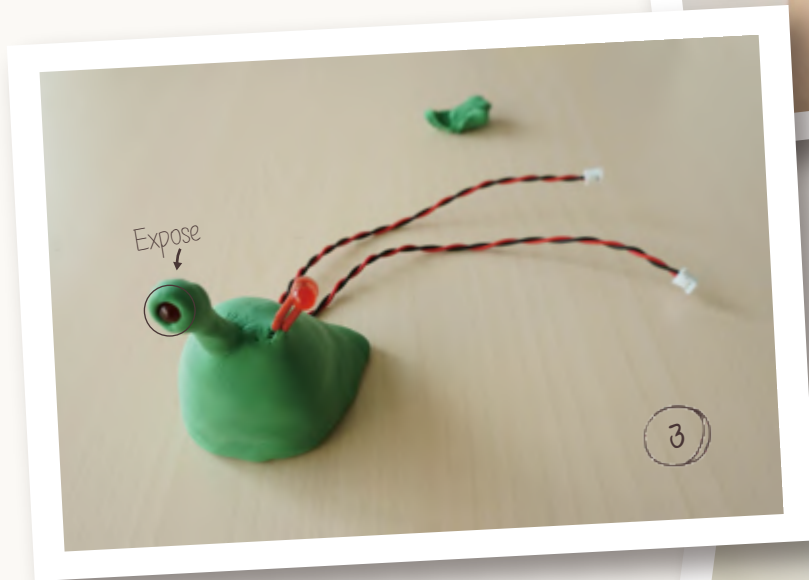
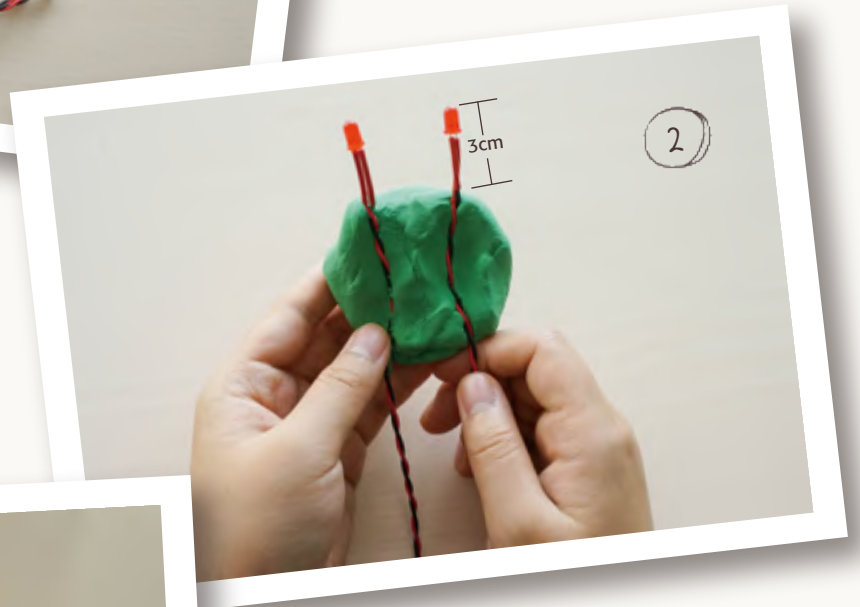
**Tips:** The color theory on the box is for your reference.

## Step 2



- ◀ Separate the Yellow-Green clay into two clots: bigger clot for body and smaller clot for eyes. Make two "Eyes" with two red LEDs as shown in picture.

Wrap the LED cables around the ► Yellow-Green clay. Set about 3 cm the LED aside.



- ◀ Pinch out of the body and bend the upper of the LEDs into 90 degrees.

Wrap the LEDs with the clay and ► expose a little bit of the LED.



**Tips:** Exposure of the LED lights achieves better effects.

# Step 3

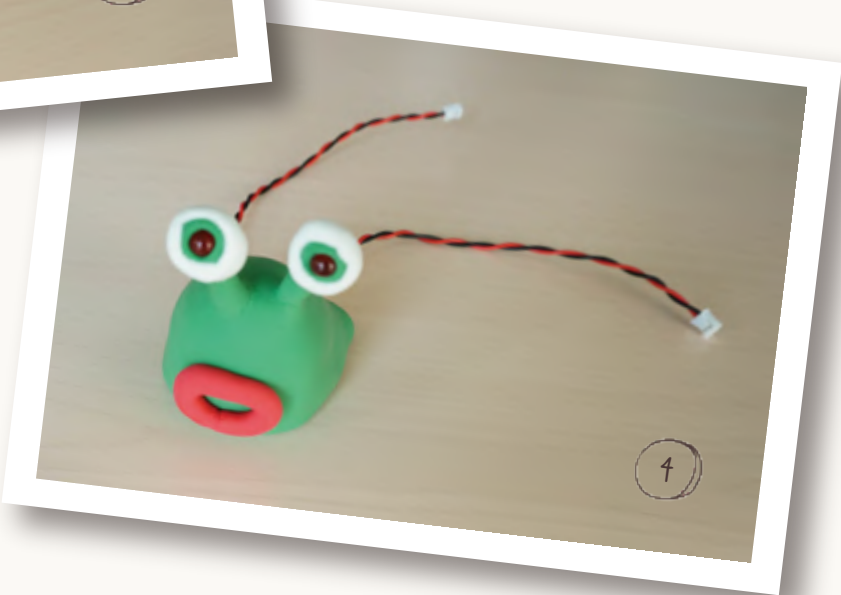


Wrap the eyes with white clay as the slug's eyelids.



Attach the doughnut on the slug body in the position of the mouth. Here you've created a funny slug out of clay.

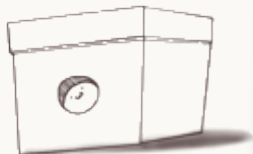
Roll out a piece of the red clay and form it into a doughnut shape.





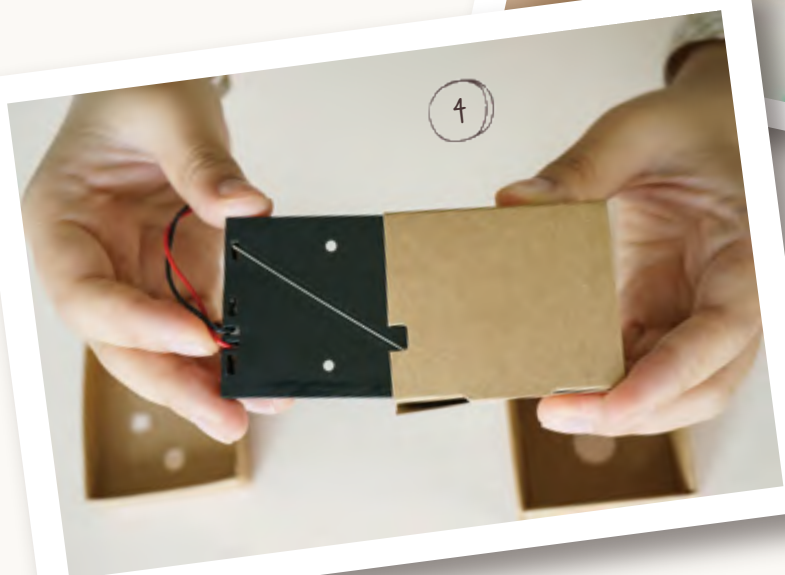
## Step4

There is a hole at the bottom of the small box. Take out the battery holder by pushing it with your fingers through the hole.



◀ Take out the battery holder sheath.

Put 3xAA battery into the holder sheath.

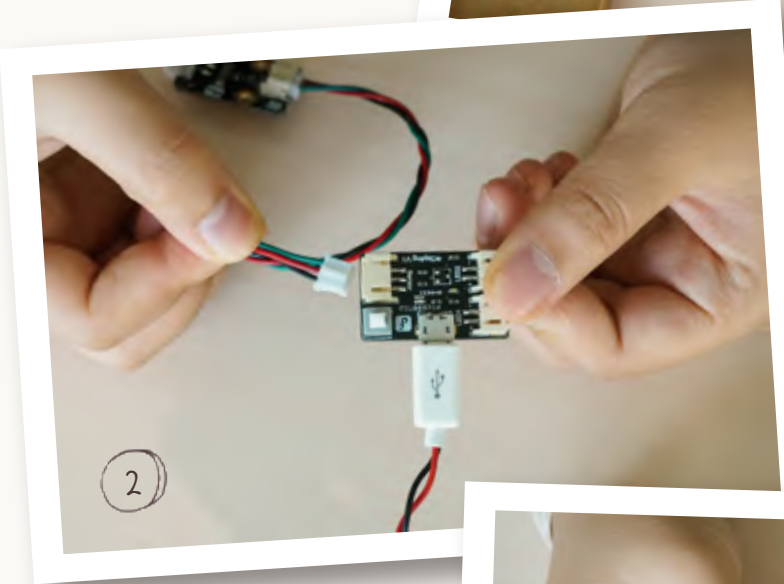
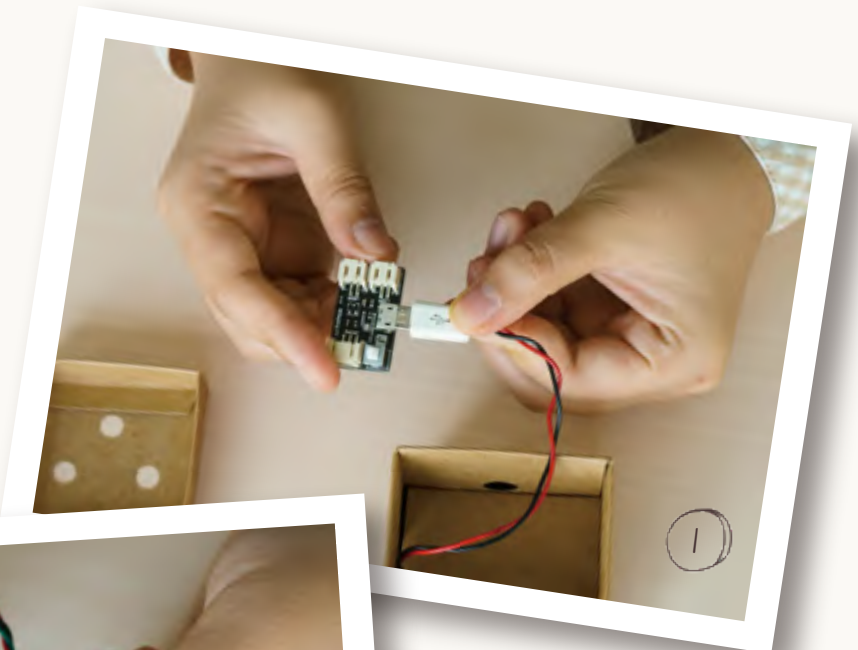


◀ Set the battery holder back to the battery holder sheath.



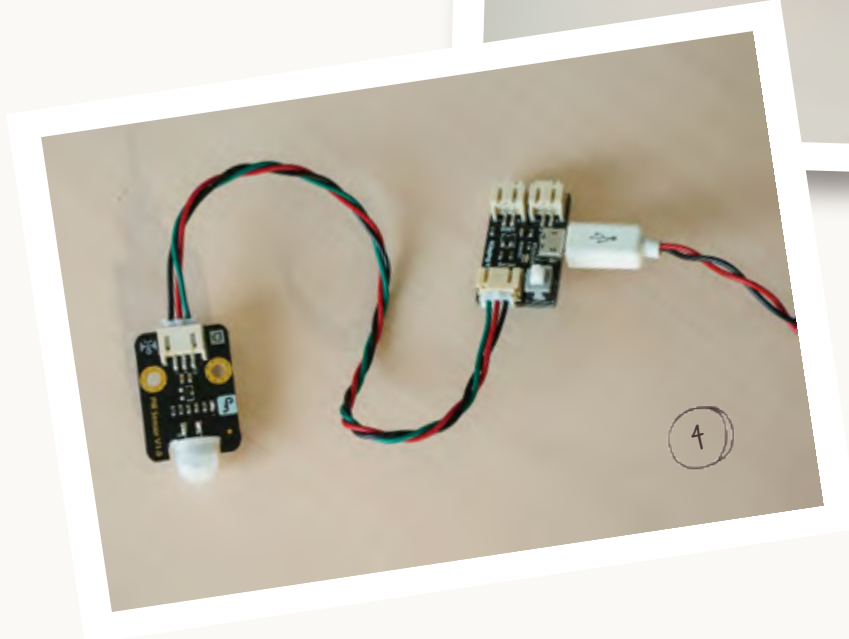
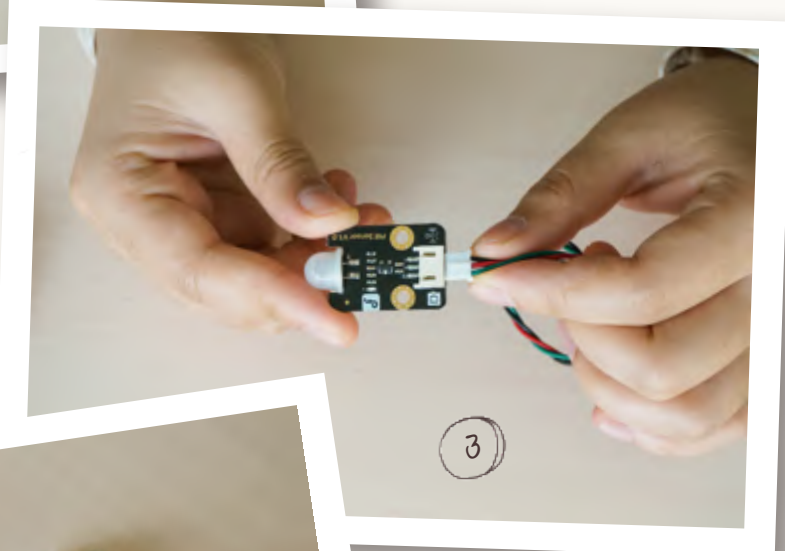
# Step 5

Connect the battery cable to the power supply board.

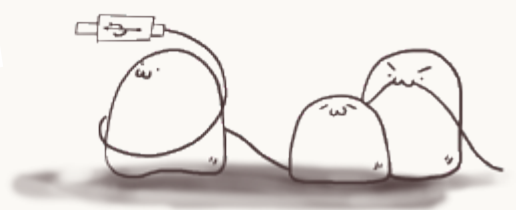


◀ The 3pin cable included in the package of LEDs is for connecting the sensor to the power board.

Connect the other side of the 3pin cable to the PIR motion sensor.



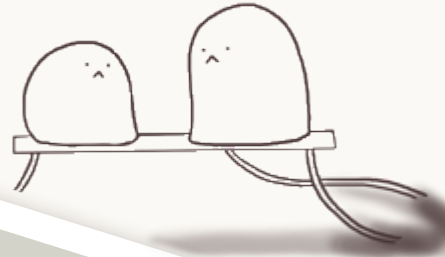
◀ The connection diagram is shown in figure 4.



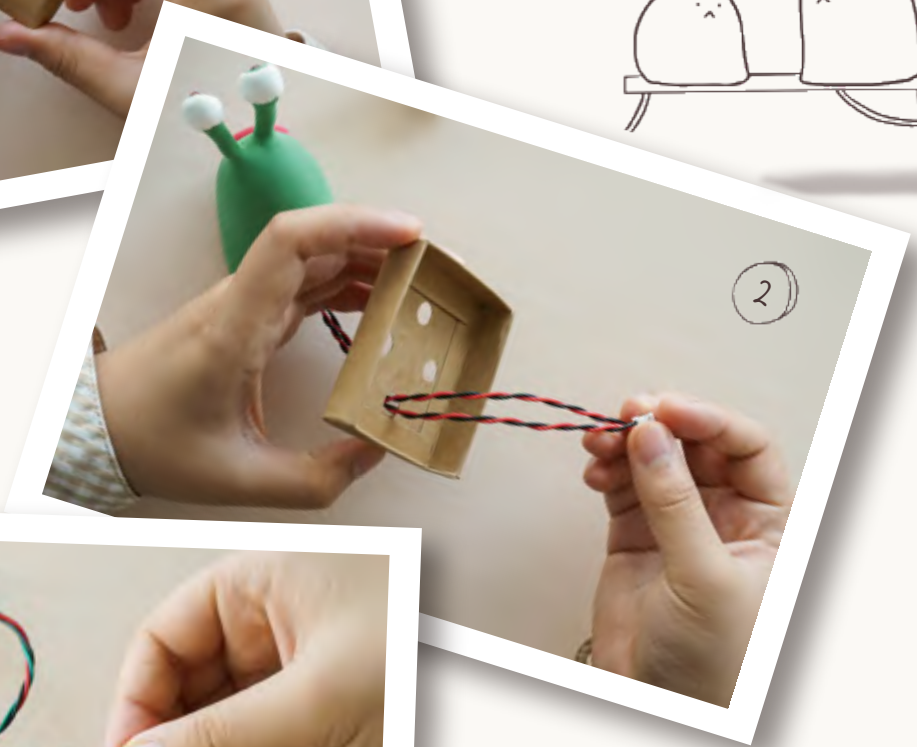
## Step 6



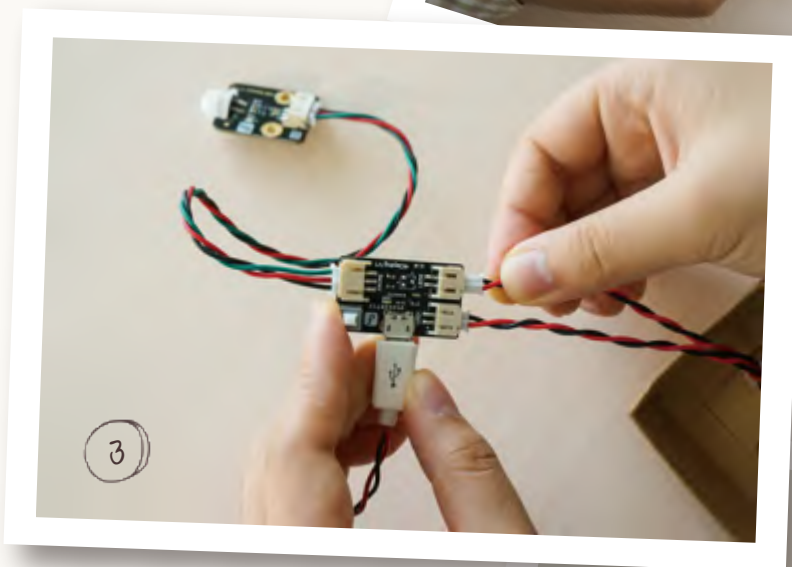
◀ Four small holes on the box cover are for threading.



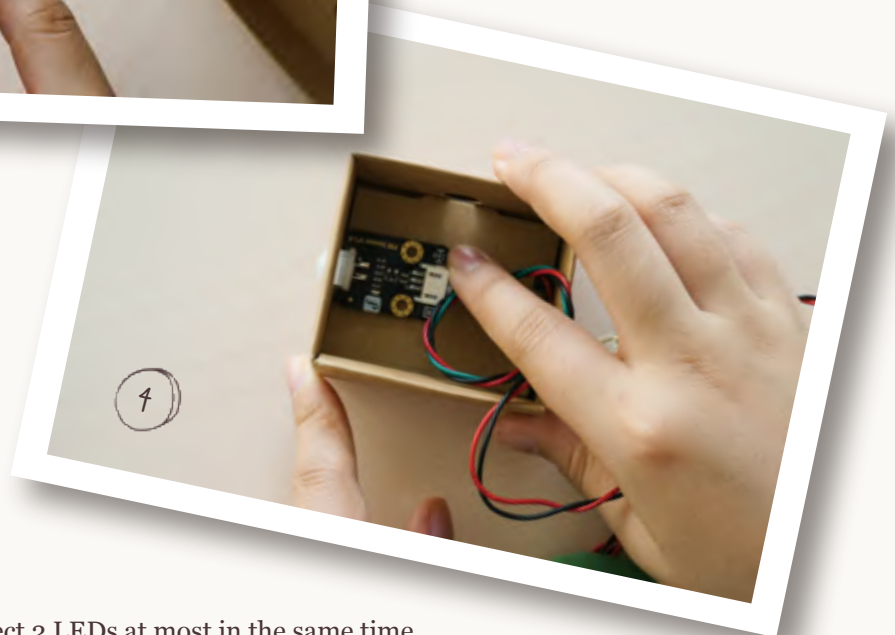
Thread the LED cable ▶ through the hole.



◀ Connect the two LEDs to the power board.



Put the PIR motion sensor ▶ in the box. You can expose more of the probe to.

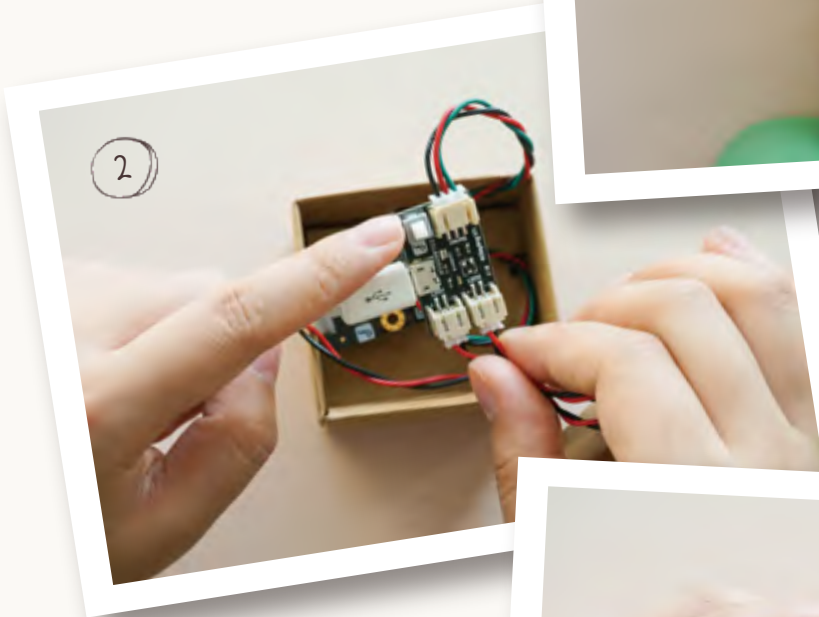
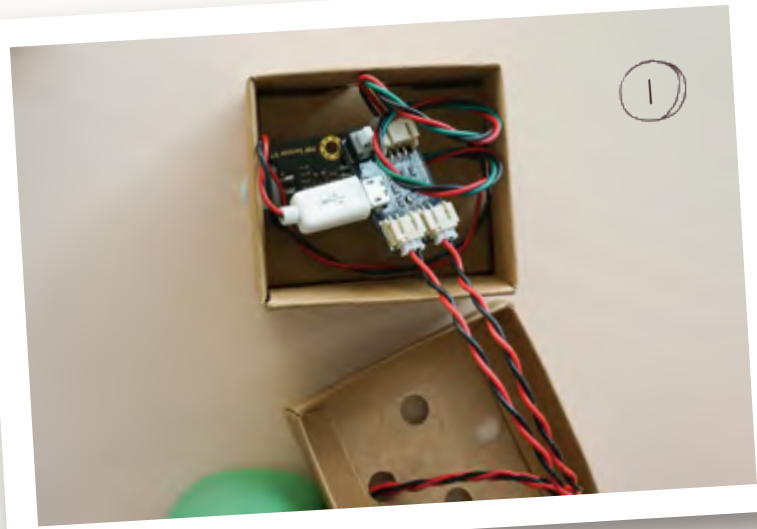


**Tips:** The power board is to connect 2 LEDs at most in the same time. Please pull out the cable slowly when changing the LEDs.



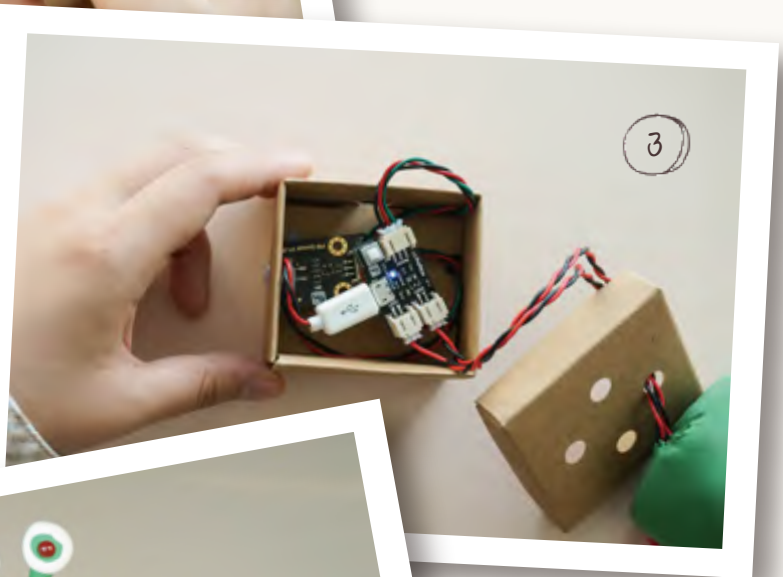
# Step 7

Wrap all boards and cables into the box. ▶

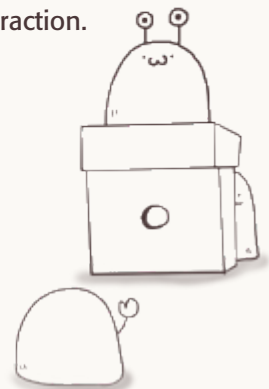


◀ Here is the power switch. Press it to power on or power off.

▶ The blue LED on the board is to be lit up when the board is powered on.



◀ Keep the sensor probe close to the entrance to improve the effect of interaction.



**Tips:** The PIR (Motion) Sensor detects the infrared signals from human body or other animals and triggered by movement. When somebody is moving in front of the slug. Its eyes will light on.



4Claying electronic DIY kit is a kit that combines the fun of sculpting with super lightweight clay and building interactive circuits. It is a great way of helping kids to learn the basics of electronics and to play with sensors in an easy and intuitive way. The kit contains not only vibrant colored, toxic free lightweight modeling clay, but also high quality color LEDs and motion sensors to make your sculptures "alive". With up to 6 colors of clay and 4 colors of LEDs, you will be able to create a full color spectrum and make your creation look fabulous. You can make use of these LEDs as eyes, stars or whatever you want, and use the motion sensor as a trigger. For example, a cat that blinks eyes when you come close or walk by. This PIR (Motion) Sensor can detect the infrared signals from the person or animals which are moving, and can output the switching signal.

 dfrobot

 dfrobot

 dfrobotcn

[www.DFRobot.com](http://www.DFRobot.com)

**DFROBOT**<sup>®</sup>  
DRIVE THE FUTURE